

# Community Health Insights in the 406

Finding the Public Health Data You Need

Confluence 2024 Conference



DEPARTMENT OF  
**PUBLIC HEALTH &  
HUMAN SERVICES**

# What does Insights have to offer?

- Data Sources
- View Data by Topic
- Compare Counties
- Regional Summaries
- Feature Links
- Additional Resources

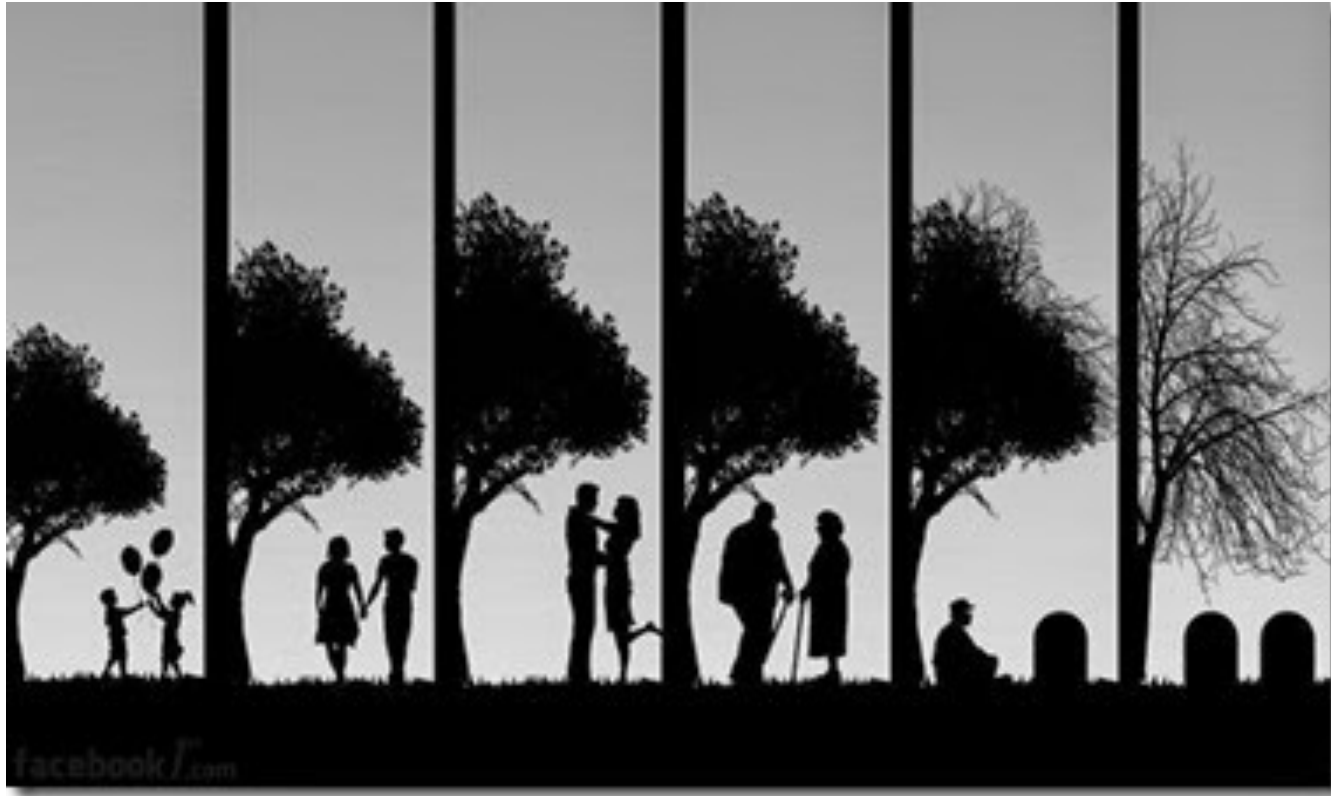


# Data Sources



DEPARTMENT OF  
**PUBLIC HEALTH &  
HUMAN SERVICES**

# Vital Statistics



DEPARTMENT OF  
PUBLIC HEALTH &  
HUMAN SERVICES

# Death Data

- Data on all resident deaths and deaths that occurred in state
  - Cause of death
    - underlying vs. multiple causes
  - Location of residence
    - down to county
  - Location of death
    - hospital, home, nursing home, or other
  - Demographic information
  - Did tobacco use contribute to death
    - yes, no, probably, unknown
  - Manner of death



# Birth Data

- Data on all resident births and births that occurred in state
  - Parental characteristics
  - Location of birth
    - hospital, birthing center, home etc.
  - Prenatal care
  - Smoking/alcohol use during pregnancy
  - Method of delivery
  - Birth outcomes
    - weight, apgar score, abnormal conditions
  - Breastfeeding status at discharge



# Hospital and Emergency department discharge data



# ED Encounters and Inpatient Admissions

- Data on ED and hospital discharges from majority of hospitals in state
  - Voluntary system through Montana Hospital Association
- Does not represent individual people and cannot be de-duplicated
  - A person may have been transferred to another hospital, which would be counted twice as two discharges



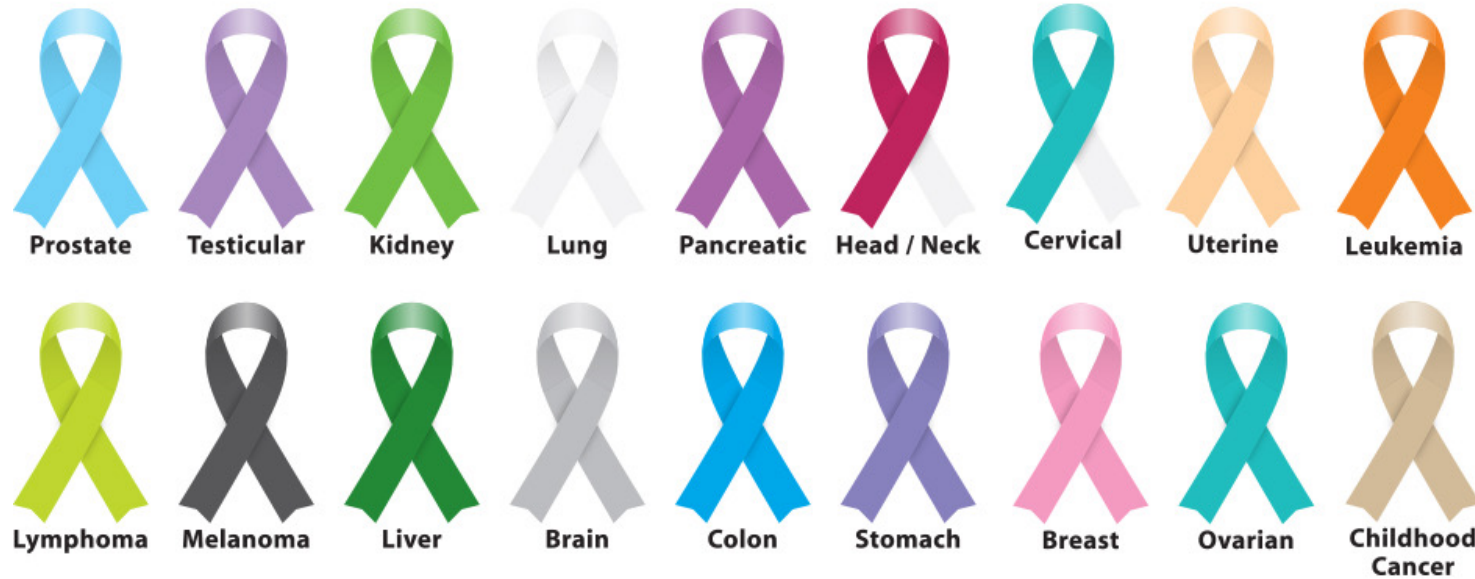


# ED Encounters and Inpatient Admissions

- Age
- Sex
- Length of stay
- Date of admission
- Primary diagnosis
- Secondary diagnoses
  - Up to 8 total
- Procedure codes
- E-codes
  - Up to 3
- Total charges
- County of residence



# Montana Central Tumor Registry



DEPARTMENT OF  
PUBLIC HEALTH &  
HUMAN SERVICES

# Central Tumor Registry

- Registry for information on new cancer cases, cancer treatment, and outcomes
  - All health care facilities and providers must report new cases per MT law
  - MT has collected data since 1979, more than 95% of all cancers recorded

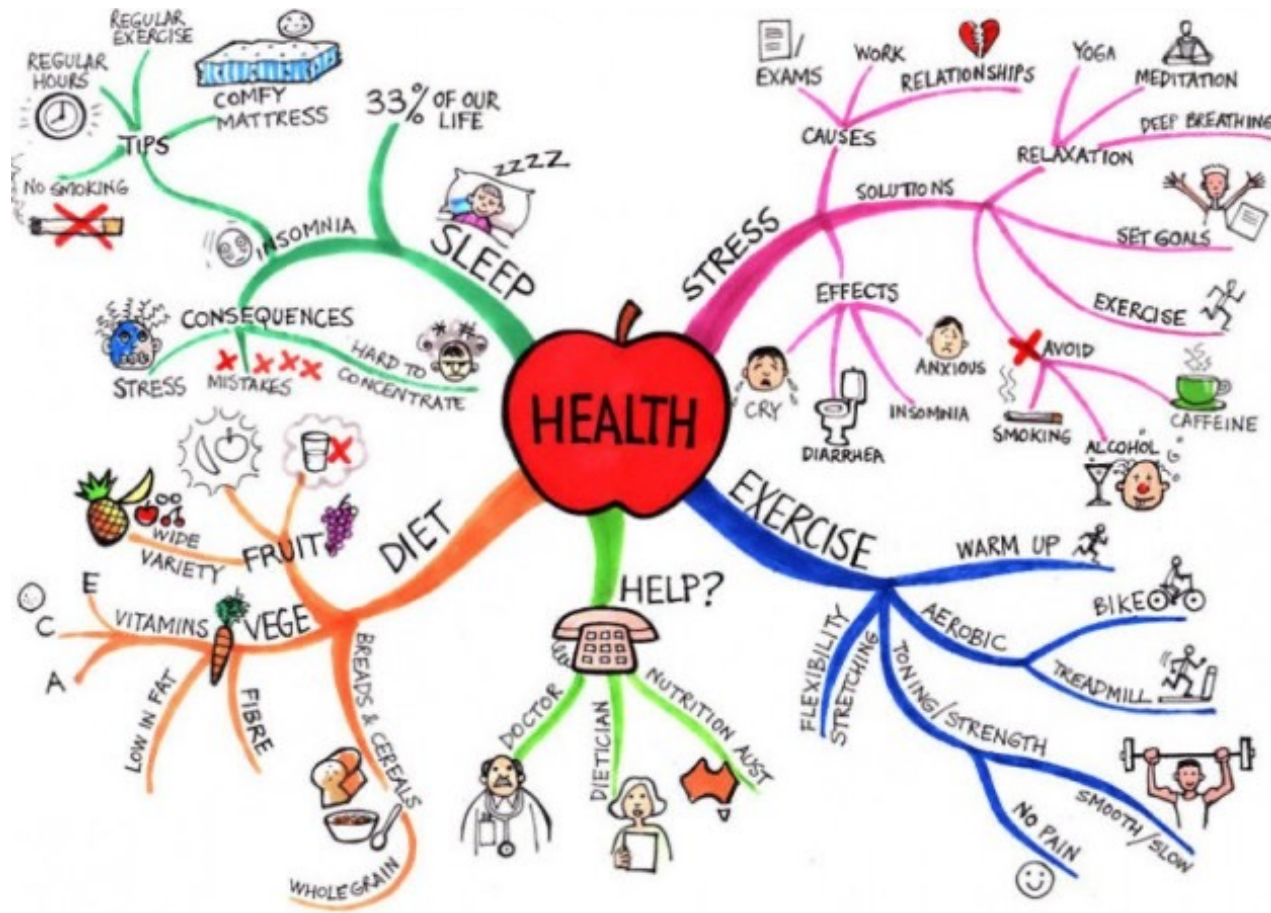


# Central Tumor Registry

- Data available on demographics, treatment information, cancer site and type, stage at diagnosis
- Easily compared with other states
- Not duplicated
- Limited on the level of information that can be released to external parties



# Behavioral Risk Factor Surveillance System (BRFSS)



# BRFSS

- Random Digit Dialed Telephone Survey
- Data is available annually
- Asks adults about chronic conditions and health-related behaviors
- Designed for State-Level Estimates



# BRFSS

- **Strengths**

- Only source for many chronic disease and behavioral risks
- State-level estimates that are comparable across the U.S.
- Estimates by Health Planning Region available
- Ability to add MT specific questions
- Weighted to be representative of all non-institutionalized adults

- **Limitations**

- Direct estimates are not usually possible for County and smaller areas
- Telephone survey so there are some populations that are missed
- Under-report socially undesirable behaviors



# Small Area Estimation

- Use population characteristics & statistics to get estimates at the county level
- Currently available Through [CDC Places](#) for:
  - Health Outcomes
  - Prevention
  - Health Risk Behaviors
  - Disability
  - Health Status
  - Social Determinants of Health





# National Data Sources

- American Community Survey
- Air Quality
- National Immunization Survey
- National birth and death data (just used to compare to MT data)
- Places



# View Data by Topic



DEPARTMENT OF  
PUBLIC HEALTH &  
HUMAN SERVICES

# Community Health Insights in the 406



Health Topics ▾

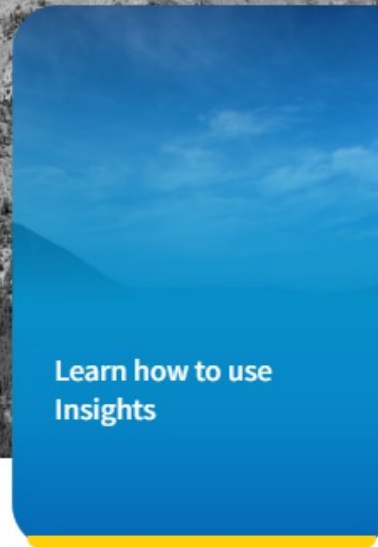
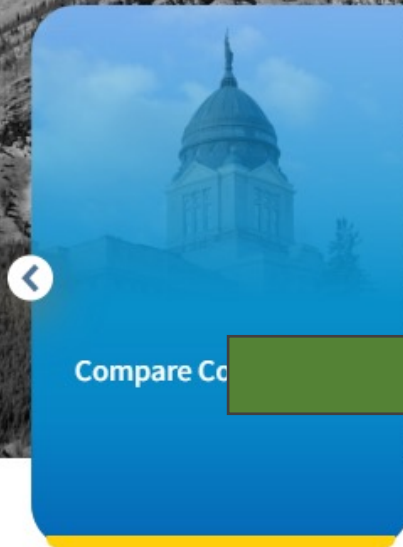
Sources ▾

Additional Resources ▾



A A A

As a **Resident** you can



DEPARTMENT OF  
**PUBLIC HEALTH &  
HUMAN SERVICES**

## View Data By Topic

I want to take a look at\*  
All

To get information on  
All

Which is captured as a part of  
All

Find Results

## All Health Topics

Explore a wide range of factors contributing to health and well-being in a community.

### Health Conditions

General Health Status Behavioral Health Chronic Conditions Cancer Pregnancy and Childbirth

### Health Behaviors

Drug and Alcohol Use Tobacco Use Immunizations Violence Prevention Injury Prevention Nutrition and Healthy Eating  
Physical Activity

### Populations

Birth Data Mortality Data Healthcare Utilization Population Estimates

### Settings and Systems

Transportation

### Social Determinants of Health

Social Context Health Care Access Education Neighborhood and Built Environment Economic Stability



DEPARTMENT OF  
**PUBLIC HEALTH &  
HUMAN SERVICES**

Select Topic  
Health Conditions

Select Subtopic  
Cancer

Which is captured as a part of  
All

## Health Conditions

Health conditions reported in this online database include chronic disease, communicable disease, behavioral health, and pregnancy and childbirth. Explore national objectives on this topic and how they compare to Montana data with [Healthy People 2030](#).

### Cancer

The number of cancer cases diagnosed in 2020 was significantly lower than in previous years both in Montana and nationally. This decrease is likely due to the disruption to healthcare services caused by the COVID-19 pandemic.

Cancer deaths were not significantly different in 2020 compared to previous years.

Select Indicator

Data Disclaimer



If data are not populated, please check filters.

\*Click this Button to Download

Download

Calculation Type

Crude-Rate



Table View



Trend View

Indicators	Sub Indicators	2000	2001	2002	2003	2004
Cancer Deaths by Site	Other/Unknown	88.85	89.42	92.58	81.45	86.56



Indicator Overview

Analyze by Subgroups

Analyze by Location

Analyze by 2 Subgroups

Select Indicator

Cancer Incidence

Sub Indicator

All Cancers

Calculation Type

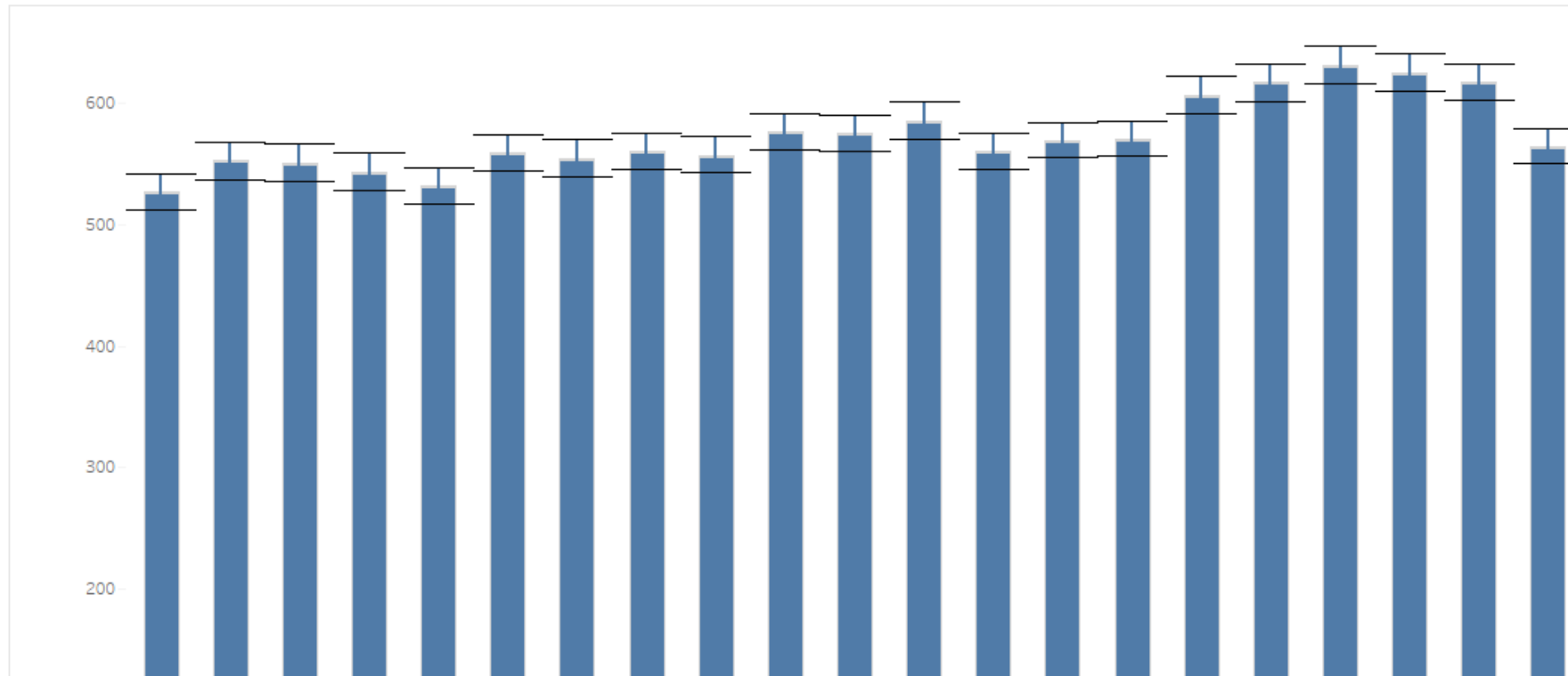
Crude-Rate

Age-Adjusted

Crude-Rate

### Cancer Incidence by Year

If data are not populated, please check filters.



DEPARTMENT OF  
PUBLIC HEALTH &  
HUMAN SERVICES

Indicator Overview

Analyze by Subgroups

Analyze by Location

Analyze by 2 Subgroups

Select Indicator

Cancer Deaths by Site

Sub Indicator

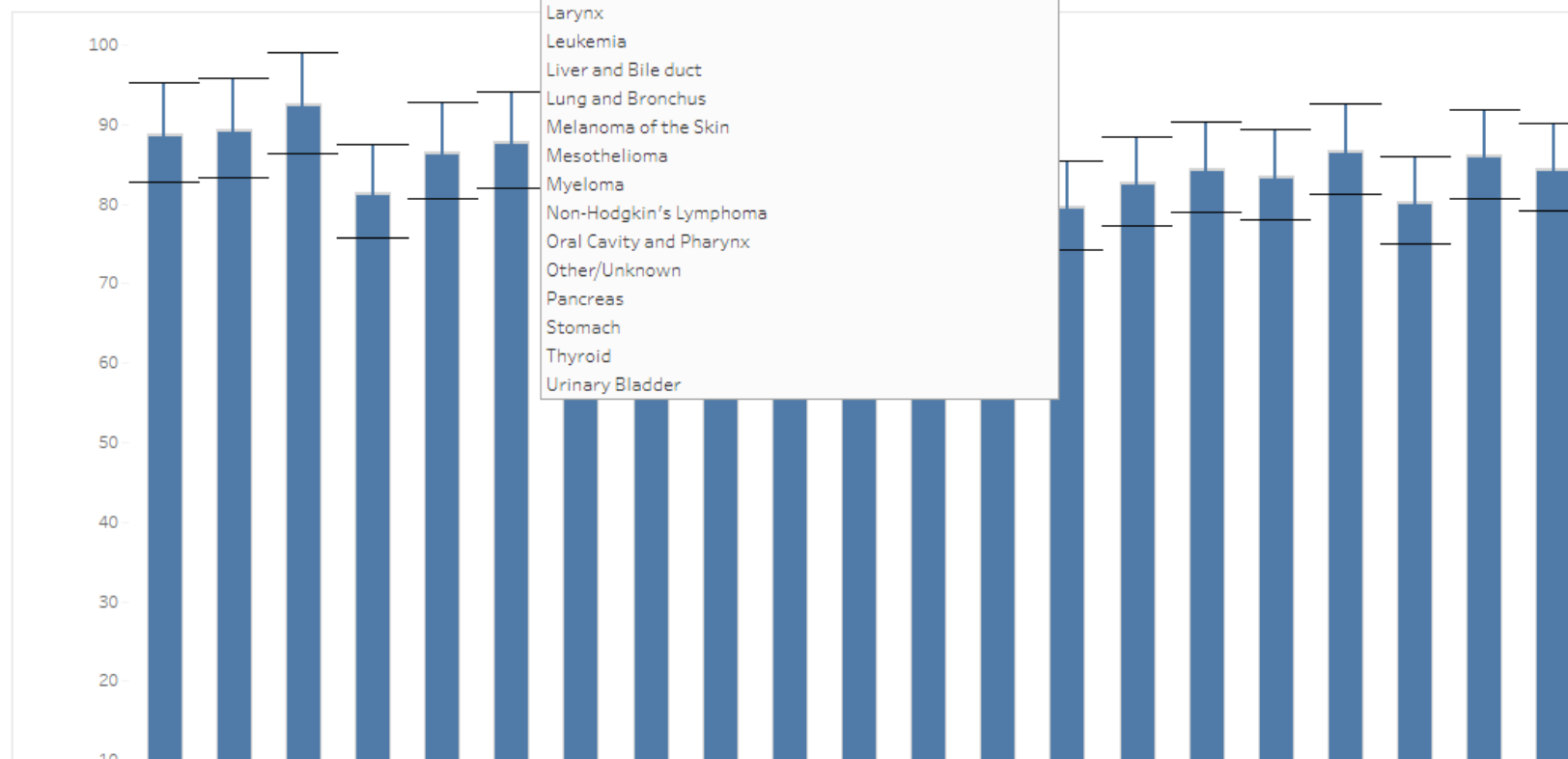
(All)

Calculation Type

Crude-Rate

### Cancer Deaths by Site by Year

If data are not populated, please check filters.



DEPARTMENT OF  
PUBLIC HEALTH &  
HUMAN SERVICES

Indicator Overview

Analyze by Subgroups

Analyze by Location

Analyze by 2 Subgroups

Select Indicator	Sub Indicator	Year	Calculation Type
Cancer Incidence	All Cancers	2009	Age-Adjusted

## Cancer Incidence - 2009

\*To Download the data  
Please select Table view  
and click download

[Download](#)

If data are not populated, please check filters.

Table 1  
Age-Adjusted by Residential County

Select View

Table

Group by

Residential County

Group by	Calculation Type	Calculated Value	LCI	UCI
BEAVERHEAD	Age-Adjusted	423.28	302.80	543.76
BIG HORN	Age-Adjusted	401.42	284.49	518.34
BLAINE	Age-Adjusted	452.28	298.81	605.76
BROADWATER	Age-Adjusted	470.21	313.38	627.03
CARBON	Age-Adjusted	380.53	278.52	482.55
CARTER	Age-Adjusted	N/A	N/A	N/A
CASCADE	Age-Adjusted	517.37	471.60	563.14
CHOUTEAU	Age-Adjusted	348.22	219.01	477.43
CUSTER	Age-Adjusted	566.64	444.20	689.09
DANIELS	Age-Adjusted	N/A	N/A	N/A

Table 2  
Age-Adjusted by Sex

Select View

Table

Group by

Sex

Group by	Calculation Type	Calculated Value	LCI	UCI
Female	Age-Adjusted	433.33	416.34	450.33
Male	Age-Adjusted	540.53	521.06	559.99

Table 3  
Age-Adjusted by Race

Select View

Table

Group by

Race

Select View

Table

Group by

(Hispanic Origin)



DEPARTMENT OF  
PUBLIC HEALTH &  
HUMAN SERVICES



Indicator Overview
Analyze by Subgroups
Analyze by Location
Analyze by 2 Subgroups

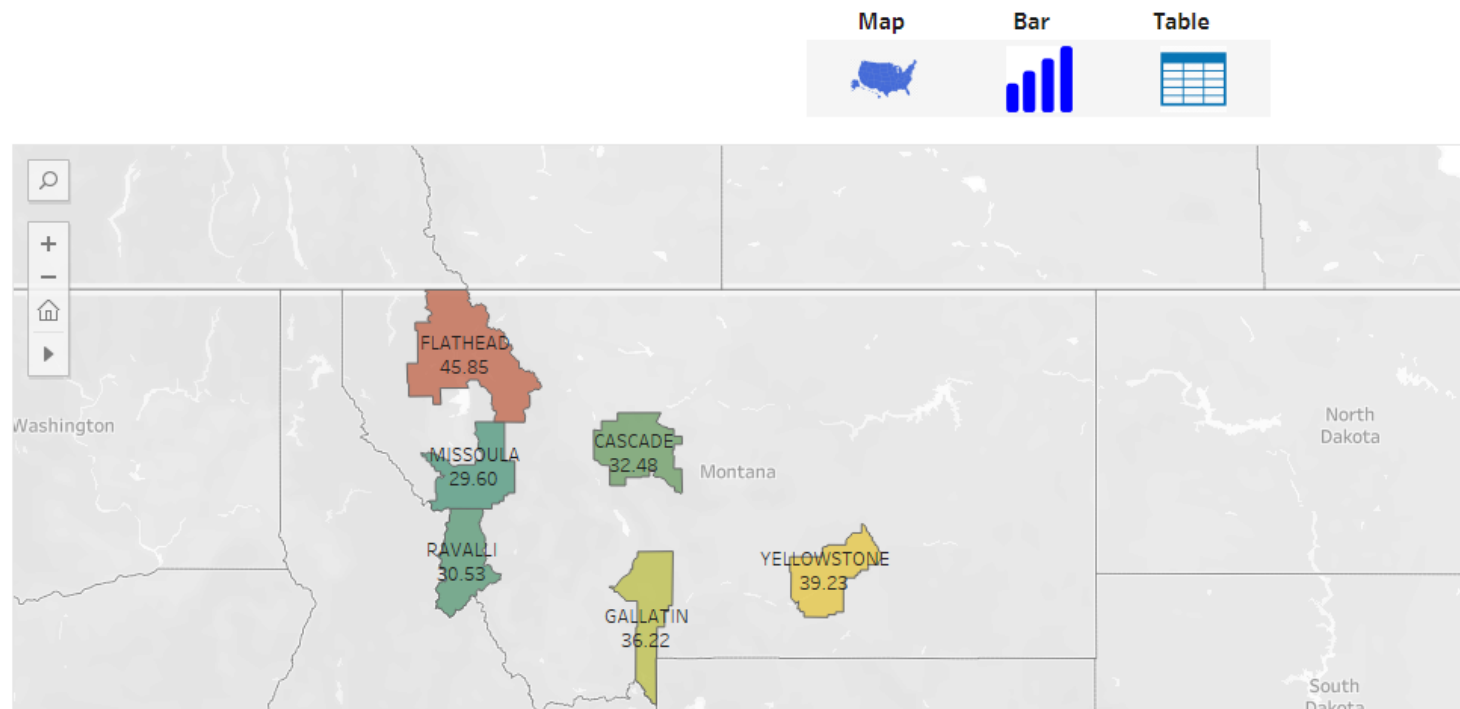
Select Indicator
Sub Indicator
Year
Calculation Type

Cancer Incidence by site
Colon and Rectum
2019
Age-Adjusted

Cancer Incidence by site - 2019

\*To Download the data  
Please select Table view  
and click download

If data are not populated, please check filters.



Indicator Overview

Analyze by Subgroups

Analyze by Location

Analyze by 2 Subgroups

Select Indicator

Cancer Incidence

Sub Indicator

All Cancers

Year

2020

Calculation Type

Age-Adjusted

Cancer Incidence - 2020

\*Click this Button to Download

Download

If data are not populated, please check filters.

Group First by

Sex

Group Second by

Race

		Race			
		American Indian/ Alas..	Asian/ Pacific Islander	Black	White
Sex	Female	532.89	N/A	N/A	380.08
	Male	596.77	N/A	N/A	437.22



DEPARTMENT OF  
PUBLIC HEALTH &  
HUMAN SERVICES

# Compare Counties



DEPARTMENT OF  
**PUBLIC HEALTH &  
HUMAN SERVICES**

As a **Resident** you can



Compare Counties

View Data By Topic

Learn how to use  
Insights

Listen to the Talking  
Health in the 406  
Podcast



Select Topic

All



Select Subtopic

All



## All Health Topics

Explore a wide range of factors contributing to health and well-being in a community.

### Health Conditions

General Health Status

Behavioral Health

Chronic Conditions

Cancer

Pregnancy and Childbirth

### Health Behaviors

Drug and Alcohol Use

Tobacco Use

Immunizations

Violence Prevention

Injury Prevention

Nutrition and Healthy Eating

Physical Activity

### Populations

Birth Data

Mortality Data

Healthcare Utilization

Population Estimates

Select Indicator

Cancer Incidence

Sub Indicator

All Cancers

Year

2019

Calculation Type

Age-Adjusted

Compare County

(All)

County Map

If data are not populated, please check filters.

## Cancer Incidence Age-Adjusted - 2019



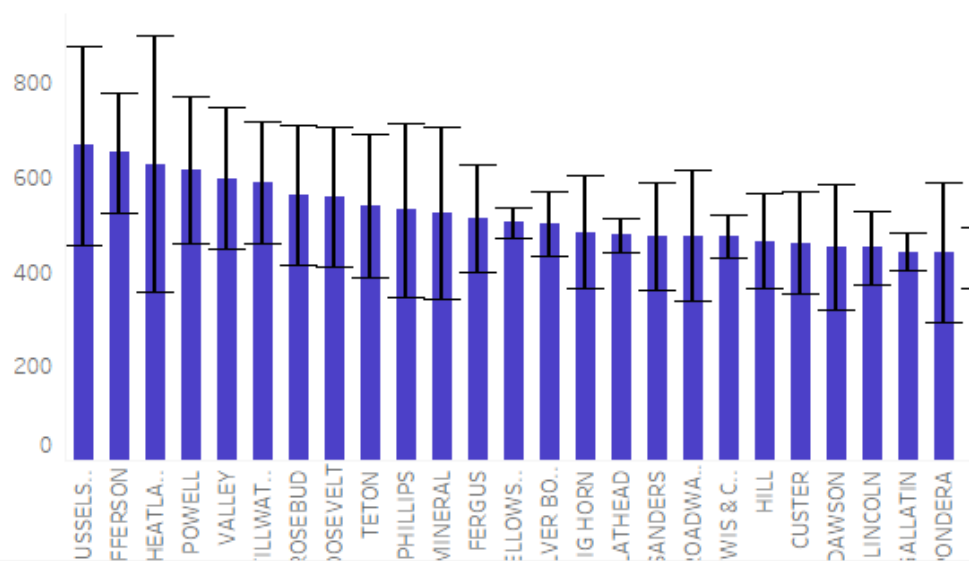
### Insights for Cancer Incidence

Highest Age-Adjusted is **MUSSELSHELL** with 666.47, LCI: 456.79 & UCI: 876.15

Lowest Age-Adjusted is **RICHLAND** with 267.61, LCI: 177.52 & UCI: 357.69

National data not available

State data not available



DEPARTMENT OF  
PUBLIC HEALTH &  
HUMAN SERVICES

Select Indicator

Cancer Incidence

Sub Indicator

All Cancers

Year

2019

Calculation Type

Age-Adjusted

Compare County

(All)

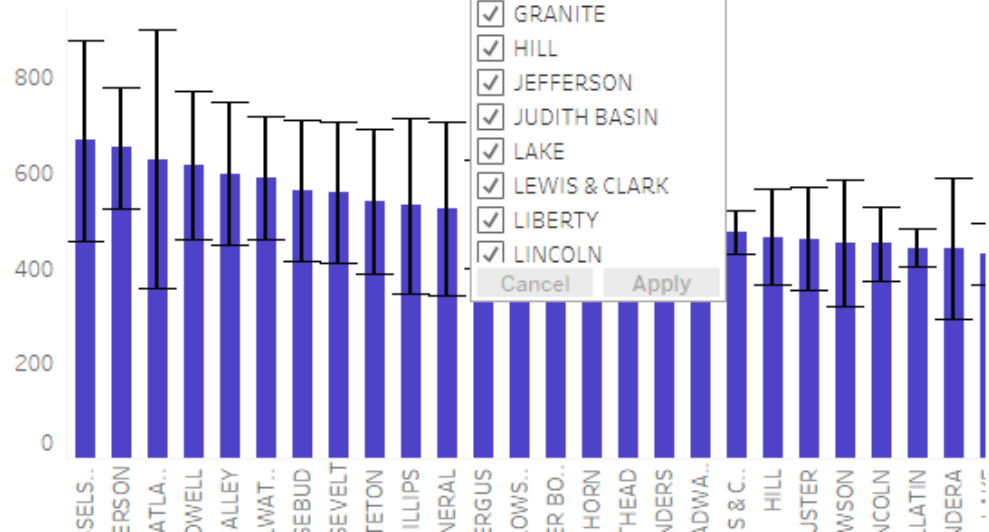
County Map

If data are not populated, please check filters.

### Cancer Incidence Age-Adjusted - 2019

National data not available

State data not available



# Regional Summaries



DEPARTMENT OF  
PUBLIC HEALTH &  
HUMAN SERVICES



# Get a snapshot of one geography across many health topics

- Regional summaries are still in development, but they will offer data snapshots at 3 different levels of geography:
  - State
  - Health Planning Regions (and maybe other regions in the future)
  - County
- Include data for the selected geography as well as a state and national comparison (where available).



# Regional Summary Sections

- Primary Indicators
  - Total population
  - % of adults who are veterans
  - % of people living at or below FPL
  - % of people living with a disability
  - % of adults who are unemployed
- Graphs
  - Birth rate trends
  - Death rate trends
- Indicator Tables



- Cancer Incidence
- Cancer Deaths
- Diabetes
- Heart Disease
- Chronic Lung Disease
- Arthritis
- Liver Disease
- Suicide
- Alcohol Use
- Other Substance Use
- Anxiety and Depression
- Birth Outcomes

- Pregnancy Risk Factors
- Motor Vehicle Crashes
- Other Injuries (non-MVC)
- Infant and Child Immunizations
- Adolescent and Adult Immunizations
- Tobacco Use
- Social and Community Context
- Healthcare Access
- Cancer Screening
- Communicable disease



# Feature Links & Additional Resources



DEPARTMENT OF  
PUBLIC HEALTH &  
HUMAN SERVICES

# Feature Links are right under the blue cards

## Feature Links



Nov 17, 2023

### Montana Public Health Data Request Process

Can't find what you need on Community Health Insights? You can request a dataset for research or a custom analysis by following t...

### MONTANA EMS, TRAUMA SYSTEMS & INJURY PREVENTION PROGRAM

Nov 15, 2023

### Montana Injury and Overdose Indicators

This interactive dashboard provides statistics on injury and overdose deaths as well as non-fatal injuries by age, sex, and county of...



Nov 8, 2023

### Advancing Health Literacy with Inclusive Communication

We have a shared responsibility to ensure all people can find, understand, and use information and services to inform health...

[View all](#)



DEPARTMENT OF  
PUBLIC HEALTH &  
HUMAN SERVICES

# Additional Resources are in the top menu



# Contact me for any questions related to getting Public Health data

Heather Zimmerman

[hzimmerman@mt.gov](mailto:hzimmerman@mt.gov)

406-444-2732



DEPARTMENT OF  
PUBLIC HEALTH &  
HUMAN SERVICES